

PUPS FLYBOX

**Internal, retractable power supply for
the distribution of energy and services**

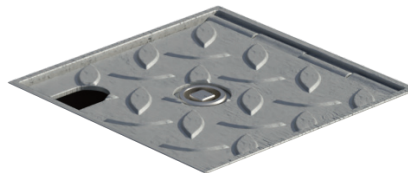
MECHANICAL SPECS

Distribution of energy and other services, entirely made of AISI304 stainless steel with its 125kN stainless steel* cover with almond finish completed with cable outlet to allow to use the unit with its cover closed. Manual lifting with its square key and closing guaranteed by a AISI304 stainless steel bronzed bayonet lock. Dimensions 120x120mm, h400mm.

SOCKET TYPES

- 01 2P+E 16A Fly Socket
- 01 3P+N+E 32A fly socket
- 01 3P+N+E 16A fly socket
- 01 2P + E 32A fly socket

AVAILABLE COVERS



125kN STAINLESS STEEL* COVER
with ALMOND FINISH



TECHNICAL DETAILS

STRUCTURE

- Structure: AISI304 stainless steel
- Structure: AISI316L stainless steel (only on demand)

CONNECTION SYSTEM

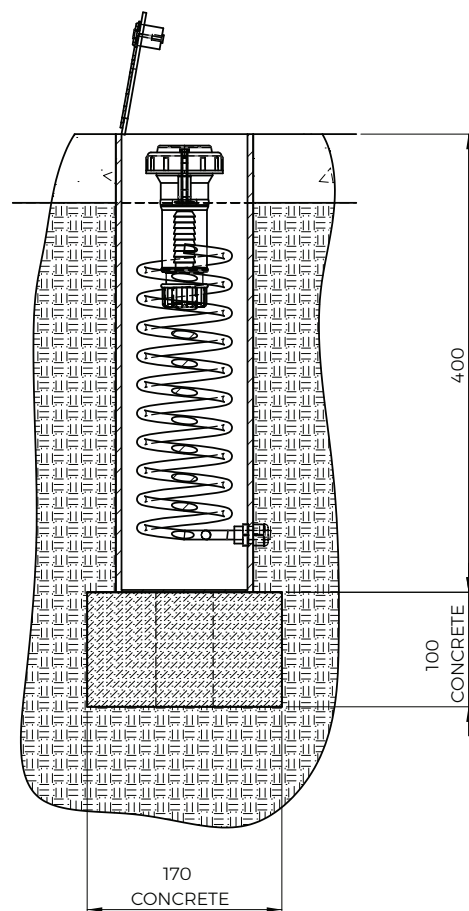
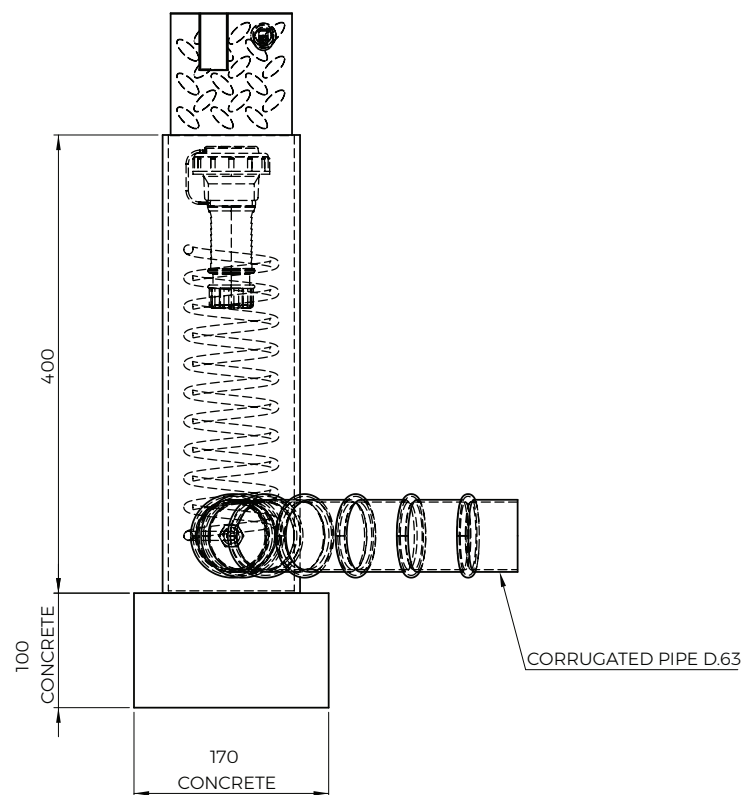
- Connection TBC

ELECTRICAL SPECS

- Voltage - 230V/400V
- Frequency - from 50hz to 60hz
- Standard protection of the sockets IP67
- Regulation - EN 60947-1 and EN 61439

* Electro pickling and electropolishing with passivation of stainless steel treatment to finish and clean the covers from welding marks

TECHNICAL DRAWING (EXAMPLES)



PUPS FLYBOX IN-SITU EXAMPLES

