

PUPS FLYBOX

Internal, retractable power tower for distribution of energy and services

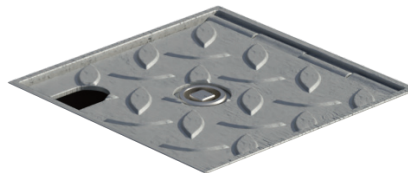
MECHANICAL SPECS

Distribution of energy and other services, entirely made of AISI304 stainless steel with its 125kN stainless steel* cover with almond finish completed with cable outlet to allow to use the unit with its cover closed. Manual lifting with its square key and closing guaranteed by a AISI304 stainless steel bronzed bayonet lock. Dimensions 120x120mm, h400mm.

SOCKET TYPES

- 01 2P+E 16A Fly Socket
- 01 3P+N+E 32A fly socket
- 01 3P+N+E 16A fly socket
- 01 2P + E 32A fly socket

AVAILABLE COVERS



125kN STAINLESS STEEL* COVER
with ALMOND FINISH



TECHNICAL DETAILS

STRUCTURE

- Structure: AISI304 stainless steel
- Structure: AISI316L stainless steel (only on demand)

CONNECTION SYSTEM

- Connection TBC

ELECTRICAL SPECS

- Voltage - 230V/400V
- Frequency - from 50hz to 60hz
- Standard protection of the sockets IP67
- Regulation - EN 60947-1 and EN 61439

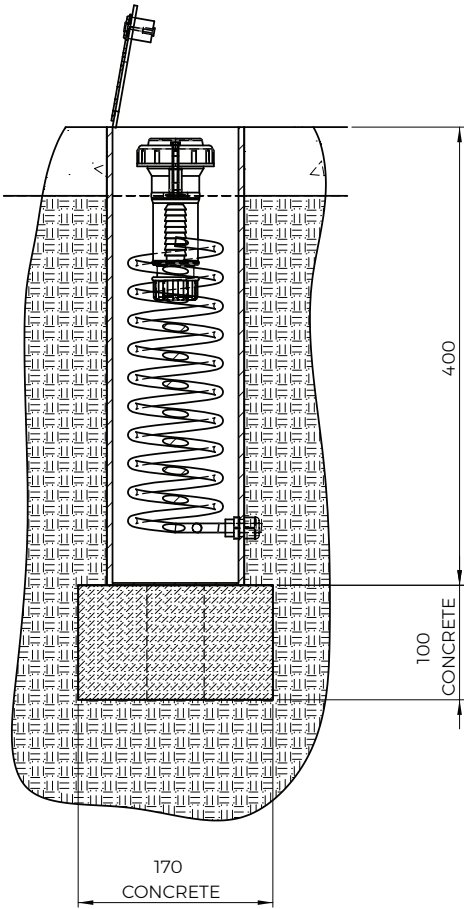
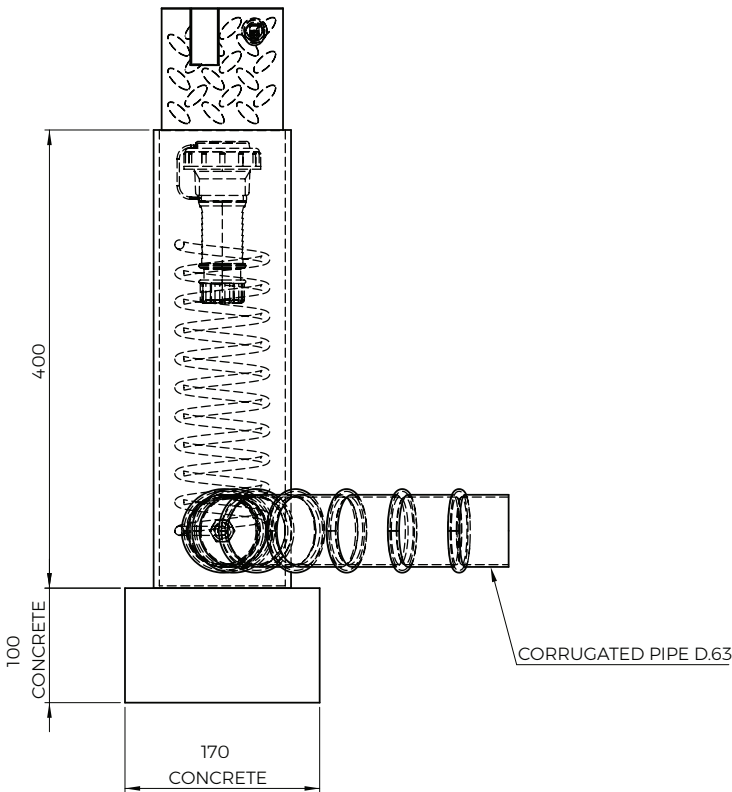
* Electro pickling and electropolishing with passivation of stainless steel treatment to finish and clean the covers from welding marks

TECHNICAL DRAWING (EXAMPLES)

Text

Text

Text



PUPS FLYBOX IN-SITU EXAMPLES

Text

