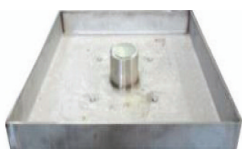


PUPS 04

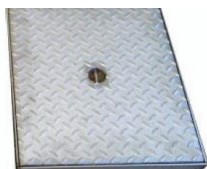
Total power 63 amps single or 3 phase incoming supply.
Can be used to supply electricity, water, gas and telephone.
Raised by turning handle or with manual lifting (suitable for use in HGV areas).



COVER TYPES



A. Cover to fill stainless steel AISI304 20t load



B. Cover closed stainless steel AISI304 20t load

ELECTICAL CONFIGURATIONS

1. (For a stage or events)

1 no. 63 amp 5P sockets with RCBO protection

2. (For a stage or events)

2 no. 32 amp 5P sockets with RCBO protection

3. (For a market)

6 no. 16 amp 2P sockets with RCBO protection

2 no. 32 amp 2P sockets with RCBO protection

4. (For a market)

8 no. 16 amp 2P sockets with RCBO protection

TYPE OF MOVEMENT

Manual lifting (less than 15kg)

TOTAL WEIGHT

125kg in concrete

35kg in axylon

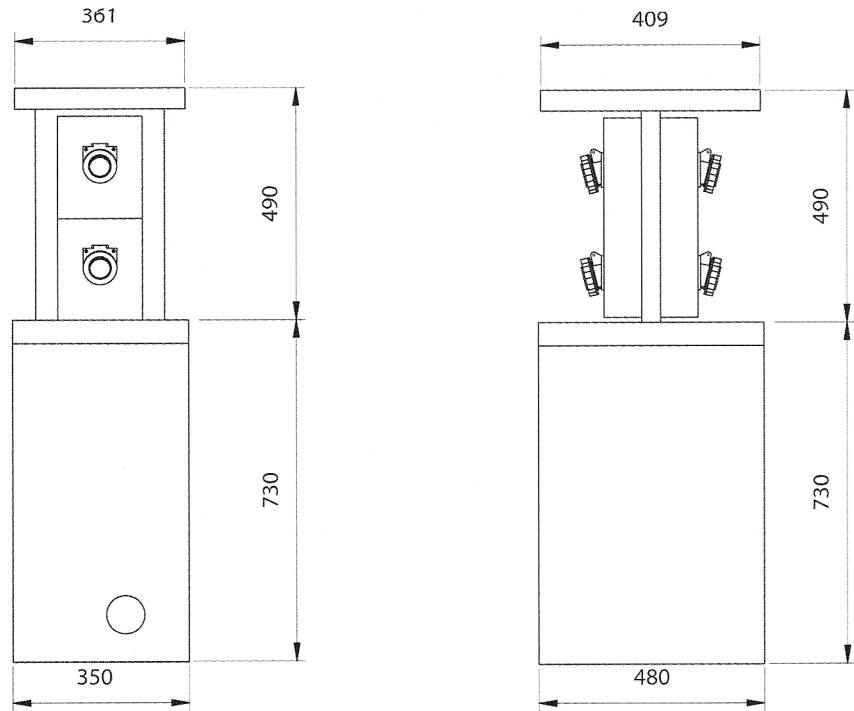
STRUCTURE

Stainless steel, cast iron and concrete

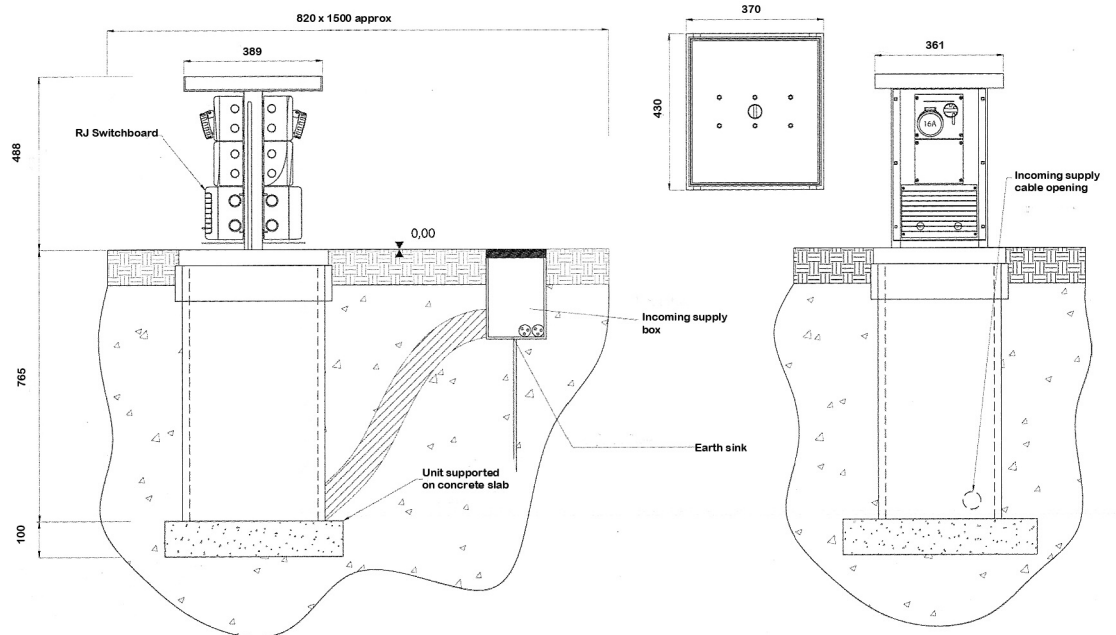
ADDITIONAL EQUIPMENT

- Compressed air system
- Gas system
- Telephone system
- Jacks Rj-data
- Audio-video connectors

PUPS04 STANDARD DIMENSIONS



PUPS04 TYPICAL INSTALLATION



HEAD OFFICE
PO Box 1447
Ilford, Essex IG2 6GT

Tel: +44 (0)20 8227 0208

SCOTLAND & NORTHERN IRELAND
PO Box 11355
Paisley PA3 9DW

Tel: +44 (0)141 533 0554

www.popuppower.co.uk