

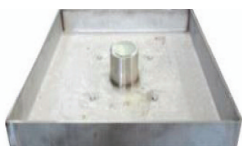
PUPS 02 4040

Total power 32 amps single supply. Supplies electricity, water and data points to public places. Operates unattended with the lid locked down, with only the power cable protruding.

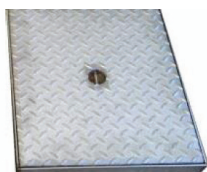


- "Flip Lid" power supply unit model "PUPS02", for power distribution and other services; totally hidden even in operation overall depth of unit 450mm.
- Cover in stainless steel, recessed to fill with matching surface finish, or closed; cover size 440 x 440mm opening facilitated by a pivot partially pull-out from the lid surface, and a dual gas actuator.
- Cover secured in closed position by safety bayonet lock in bronze, with lever lock in stainless steel AISI 304 operated with key (square footprint).
- Operates with the cover closed and with plug inserted, through rubber door for cable outlet.
- Removable stainless steel plate for water or electrical equipment support (provision for grounding in this case).

COVER TYPES



A. Cover to fill stainless steel up to 40KN cover dimensions 440 x 440 - 50mm recess



B. Cover closed stainless steel up to 40KN cover dimensions 440 x 440 x 55mm

ELECTICAL CONFIGURATIONS

1. Shopping centres/outlet

- 1 x CEE socket 5p 32A with protection
- 1 x CEE socket 3p 16A with protection
- 1 x power supply cable

2. Shopping centres/outlet

- 1 x CEE socket 5p 32A - without RCBO
- 1 x CEE socket 5p 16A - without RCBO
- 2 x CEE socket 3p 16A - without RCBO
- 1 x power supply cable or terminal block

3. Marketplace/camping areas (400 x 400 unit only)

- 1 x CEE interlocked socket 5p 32A - without RCBO
- 1 x CEE interlocked socket 5p 16A - without RCBO
- 2 x CEE interlocked socket 3p 16A - without RCBO
- 1 x power supply cable or terminal block

NB In suggested configurations 2 & 3 above there is insufficient space within the unit to fit RCBO.

TYPE OF MOVEMENT

Semi-automatic lifting assisted with gas ram and release key with pivot to facilitate opening.

STRUCTURE

RBK concrete and stainless steel.

ADDITIONAL EQUIPMENT

- Water outlet with $\frac{1}{2}$ $\frac{3}{4}$ 1 Ball Valve
- Connectors for RJ45, video, phono, audio



HEAD OFFICE
PO Box 1447
Ilford, Essex IG2 6GT

Tel: +44 (0)20 8227 0208

SCOTLAND & NORTHERN IRELAND
PO Box 11355
Paisley PA3 9DW

Tel: +44 (0)141 533 0554

www.popuppower.co.uk